

# ABOUT US

A Journey of Success Consists of more than a Decade of Professional Telecom, Renewable Energy, Electrical & Electronics Services to many industries specially Telecom industry.



**LM** Engineering  
Services (Pvt) Limited

## CONTACT US

Office No 08, 2nd floor,  
Tahir Plaza Near Shell,  
Pump Tehsil Batkhela,  
District Malakand.

+92-345-6907303  
+92-334-9694088

info@lmies.com

http://www.lmies.com



## CORPORATE BROCHURE

Building a Legacy of Trust



**LM** Engineering  
Services (Pvt) Limited

www.lmies.com

# WELCOME TO BROCHURE

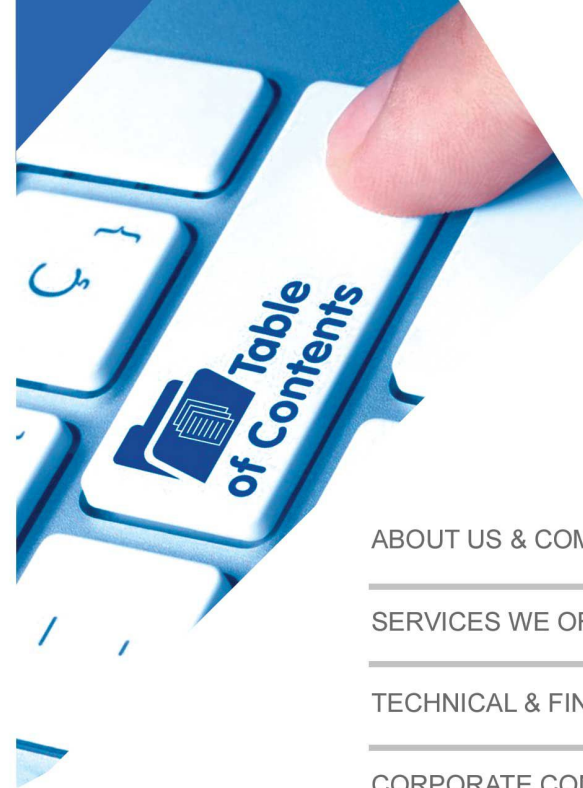
A Journey of Success Consists of more than a Decade of Professional Telecom, Renewable Energy, Electrical & Electronics Services to many industries specially Telecom industry.



Nationwide Presence make our Customers more Relax



## TABLE OF CONTENTS



ABOUT US & COMPANY VALUES	01
SERVICES WE OFFERED	02
TECHNICAL & FINANCIAL STRENGTH	03
CORPORATE COMPLIANCES	04
TOOLS & EQUIPMENT	05
PROJECTS & GALLERY	06
CLIENTS	06



# CEO

## OUR VISION

At LMI Engineering Services (Pvt) Limited we are working towards a leadership role in Construction Industry, we have earned recognition from our clients for our professionalism, expertise.

## OUR MISSION

Our mission is to increase customer convenience with the help of advanced technologies that are the essence of contemporary life.

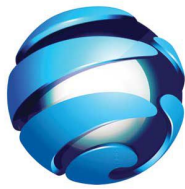
## OUR CEO MESSAGE

We Started the company Land Mark Integrated Engineering Services (Pvt) Limited in year 2025 with the aim to provide and facilitate the National and Multinational Organizations with best Renewable Energy Solutions, Telecom, Electrical and Electronics Services. By the Grace of Almighty we achieved our set objectives and today stand among the pioneers of our industry.

Taking through the legacy of the company that “we work more at less” offer you our services relating to Engineering Services.



# VISION & MISSION



## COMPANY INTRODUCTION

LMI Engineering Services (Pvt) Limited is a multipurpose Engineering Company, consultant, and solution provider. We also provide Supplies & Services related to Renewable Energy Solutions, Telecommunications, Electrical, Civil and Networking. The company also provides service in Installation, Planning, Survey Testing Commissioning, and Operation & Maintenance with optimum QoS. We also provide In-house Engineering & Manpower supply on demand.

Industrial field, Telecom Sector & Power Energy Technology are presently so diverse and complex that if not properly planned or executed can cause more harm than good to any organization.



Our experience in integrating products irrespective of any manufacturer helps our client obtain the necessary skills and information to properly implement their targeted services or/and goals getting the most out of the invested amount.

Our past experience & direct involvement with standard bodies & internationally recruited & trained staff allows us to accommodate a wide range of technology allowing successful system integration analysis and implementation.



"Be king in your dreams. Make your vow that you will reach that position, with untarnished reputation, and make no other vow to distract your attention."



## OUR SERVICES

LMI Engineering Services (Pvt) Limited provide state of the art services in various industries with most professional teams to deliver best to our customers; Our Major Services divided in four Specialization categories

## WHAT WE DO

LMI Integrated Services (Pvt) Limited main activities are engineering applied to all types of works including Industries Building and Communication Work Such as;

- \* Renewable Energy Solutions
- \* Telecommunication Expertise
- \* Electronics & Electrical

Our Prospective Customers:

- \* Mobile Telecom Service Providers
- \* Long Distance International (LDI) Companies.
- \* Wireless & Local Loop (WLL/LL) Organization.
- \* Financial Institutions.
- \* Vendor Companies Deal in Transmission Systems.
- \* DSL & Internet Service Providers (ISP's).
- \* Solution & Designers of LAN/WAN for IP Networking.
- \* Industries Zone



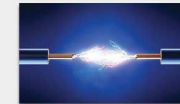
### CIVIL CONSTRUCTION



01



### ELECTRICAL & ELECTRONICS



02



### TELECOM SERVICES



03



### RENEWABLE ENERGY



04



## CIVIL SERVICES

LMI Engineering Services (Pvt) Limited is a multipurpose Engineering Company, consultant, and solution provider. We also provide Supplies & Services related to Renewable Energy Solutions, Telecommunications, Electrical, Civil and Networking. The company also provides service in Installation, Planning, Survey Testing Commissioning, and Operation & Maintenance with optimum QoS. We also provide In-house Engineering & Manpower supply on demand.

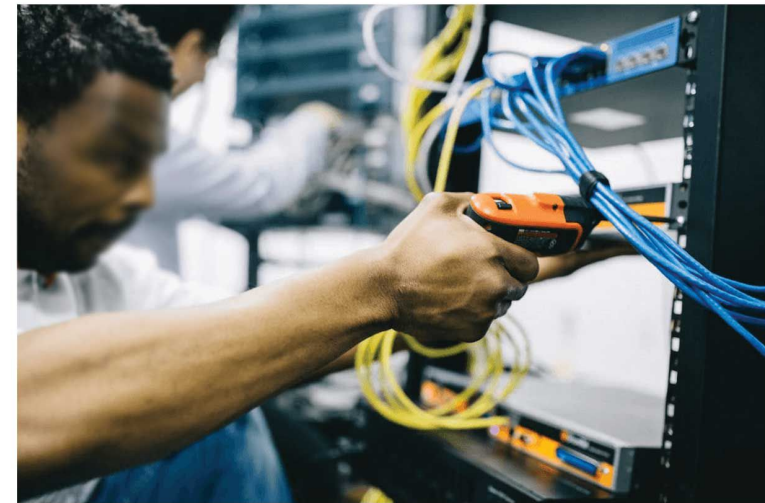
Industrial field, Telecom Sector & Power Energy Technology are presently so diverse and complex that if not properly planned or executed can cause more harm than good to any organization.



## ELECTRICAL & ELECTRONICS

Our experience in integrating products irrespective of any manufacturer helps our client obtain the necessary skills and information to properly implement their targeted services or/and goals getting the most out of the invested amount.

Our past experience & direct involvement with standard bodies & internationally recruited & trained staff allows us to accommodate a wide range of technology allowing successful system integration analysis and implementation.





## TELECOM SERVICES

- Installation & Testing of all type of BTS/RBS, BSS, BSC & MSC.
- Installation & Testing of All type of Antennas, Microwave Dishes. performing LOS activity with Mirror, Flash, Balloon and Binocular test.
- Equipped with planning tools Path loss, Global Mapper and MapInfo. performing TSS and generating TSS report. Installation & Testing of RAN (Radio Access Network) systems.
- Installation, testing and commissioning of ODF (Optical).
- Installation & Testing of Inverters.
- Installation & Testing of Rectifiers.
- Installation & Testing of Power Supply Back-up Batteries including UPS.
- Installation of Access Network Equipment like Huawei OPTIX, OLT & ONU Hardware (Installation of Access Network Equipment's Cabinet & Sub Racks within which Inserting Cards, Order Wire, Fan Box.
- Installation of Lighting Proof Box, Brackets etc. at OLT & ONU Sites).
- Installation & Testing of DC Power Distribution Box at OLT site. Installation & Testing of DDF at OLT site.
- Laying and termination of 2MB Cables from OLT to DDF Rack.
- Installation of Power Supply Cabinet on OLT site.
- Installation of Cable tray on OLT site.

## RENEWABLE ENERGIES

### Stand-alone solar systems

Solar Power's stand-alone systems are designed to match your off-grid electricity needs, Our systems use solar power as the main energy source, and can be combined with other power.

### Telecommunication and Security Applications

Telecommunications and security applications are typically located far from the reach of the electrical grid.

### Commercial grid connected solar system

A commercial grid-connected solar system provides clean energy during the day-time, and according to local regulations.

### Medium size solar system

A medium size solar power plant is usually a system with a capacity of a few hundred kilo-watts to a few mega-watts. Such power plants required a roof-top or a free-field of few a hectares.

### Net Metering solar system

Grid Parity is here! The cost of solar energy is now competitive and you can generate your own electricity with the Net-Metering program. Go green, go independence and protect yourself.





## OUR TOOLS & EQUIPMENTS



S.#	Name of Tools/Equipment	Qty
<b>GENERAL TOOLS</b>		
1	Circular Saw	1
2	Jigsaw	1
3	Angle Grinder	2
4	Air Blower	1
5	Rotary Hammer Drill	1
6	Compact Hammer Drill	2
7	Chipping Hammer Drill	1
8	Complete Electric Tools Kits	3
9	Complete Electronics Tool Kit	1
10	Trolley	1
11	Retatched Spanner	5
12	First Aid Box	5
<b>MEASURING TOOLS</b>		
1	Site Master	1
2	Digital Multi Meter	5
3	Dummy Load Bank	3
4	Splcing Machine	1
5	Power Source Meter	1
6	OTDR	1
7	Laser Gun	1
8	Clamp Meter	3
9	Earth Meter	2
<b>INSTALLATION TOOLS</b>		
1	Torque Wrench	2
2	Chain Pulley	2
3	Rope	250m



S.#	Name of Tools/Equipment	Qty
<b>INSTALLATION TOOLS</b>		
4	Safety Belt	10
5	Helmet	10
6	Networking Tool Kit	2
7	Installation Tool Kit	5
8	Measuring Tape	5
<b>SURVEYING TOOLS</b>		
1	GPS	2
2	Camera	2
3	Compass	7
4	Binoculars	2
5	Laptop	2
<b>SOFTWARE TOOLS</b>		
1	TEMPS	1
2	Map Info	1
3	Path Loss	1
4	Global Mapper	1
5	Google Earth	1



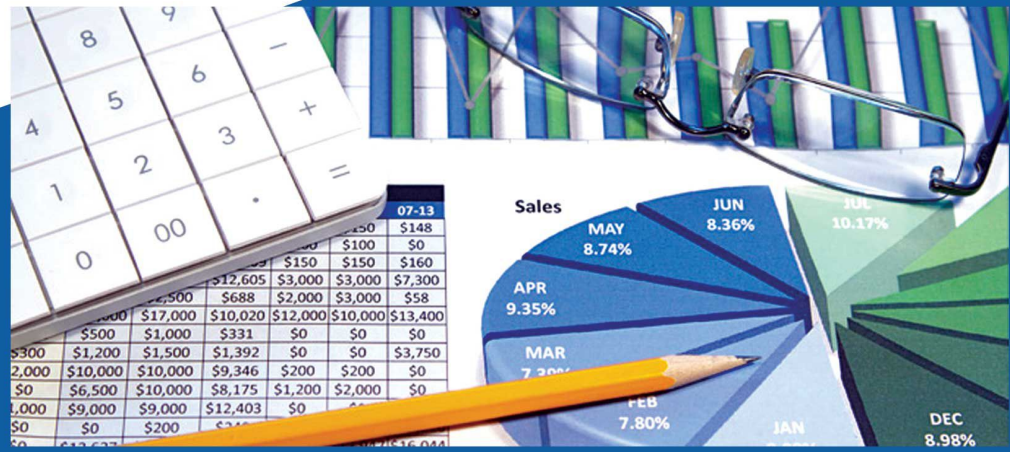
We have a Professional and Certified Equipment to execute any level of project with utmost confidence.



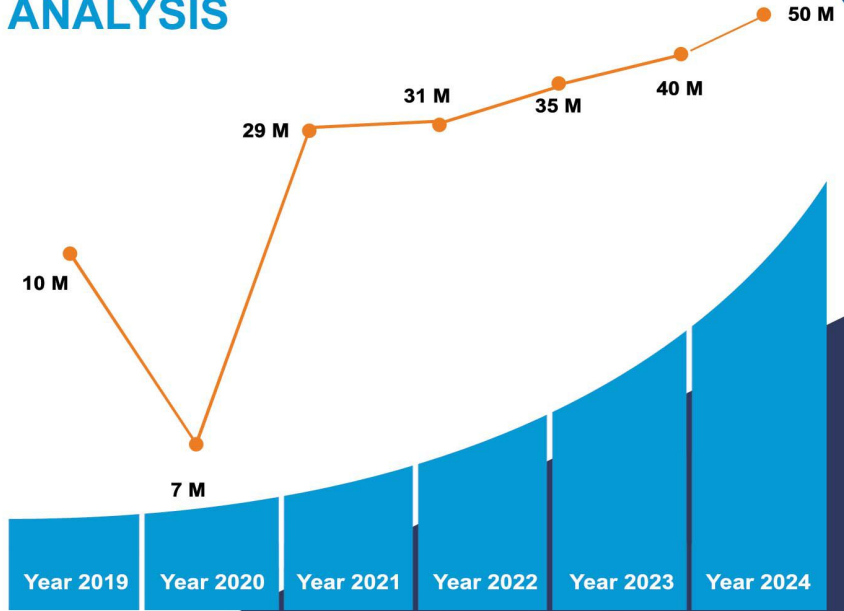
# FINANCIAL STRENGTH

We are committed to paying our fair share of tax to build a successful and sustainable business. Our approach to responsible tax management is to pay the correct amount of tax in the right jurisdictions and on time.

# POWERFULL CASHFLOWS THAT KEEPS BUSINESS ALIVE



# REVENUE ANALYSIS



175+ PROJECTS

250+ EMPLOYEES

3+ OFFICES

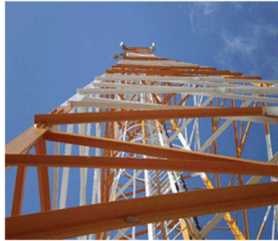


## PICTURE GALLERY





# PICTURE GALLERY



## OUR LEGAL COMPLIANCES

SECURITIES AND EXCHANGE COMMISSION OF PAKISTAN

Business Centre at Head Office Islamabad

### CERTIFICATE OF INCORPORATION

[Under section 16 of the Companies Act, 2017 (XIX of 2017)]

Corporate Unique Identification No. 0290658

I hereby certify that **LAND MARK INTEGRATED ENGINEERING SERVICES (PRIVATE) LIMITED** is this day incorporated under the Companies Act, 2017 (XIX of 2017) and that the company is **Limited by shares**.

Given at **Islamabad** this **Tenth** day of **April**, Two **Thousand** and **Twenty Five**



<https://leap.secp.gov.pk/#/verify-company-info/0290658>

CERTIFIED TRUE COPY  
SECP

This is an electronically generated document and does not require a physical signature

Disclaimer: This certificate of incorporation is not a permission to accept deposits from the general public by offering fake jobs/investment packages and return thereon, indulge in leasing/ financing of vehicles and household products etc., MLM, Pyramid and Ponzi Schemes, Lottery Business, trading in forex and virtual currencies or any other unlawful business activities

## INCORPORATION CERTIFICATE

## NATIONAL TAX CERTIFICATE



FBR PAKISTAN Government of Pakistan Federal Board of Revenue Inland Revenue Services

### TAXPAYER REGISTRATION CERTIFICATE

(Under Section 181C of the Income Tax Ordinance 2001)

Registration No.	G484061	
Date of Registration	10-Apr-2025	G484061
Type of Person	Company	
Inc. No.	0290658	
Inc. Date	10-Apr-2025	
Name	LAND MARK INTEGRATED ENGINEERING SERVICES (PRIVATE) LIMITED	
Address	Dakhana Agra, Kama Agra, Tehsil Bat Khela, Malakand, -, -, Pakistan	
Tax Office	RTO PESHAWAR	
Activity Type	Business	

Inland Revenue Service

This is a computer generated certificate and, hence, no signatures are required.  
Displaying of Taxpayer Registration Certificate is mandatory as provided under section 181C of Income Tax Ordinance 2001.

This is not a valid evidence of being a "filer" for the purposes of clauses (23A) and (35C) of sections 2 and 181A of the Income Tax Ordinance 2001.

IRIS  
PARTNER IN PROGRESS

FBR HELPLINE  
051 111 772 772  
Date of Print 10-Apr-2025  
helpline@fbr.gov.pk www.fbr.gov.pk



# KPK REVENUE BOARD CERTIFICATE



Government of the Khyber Pakhtunkhwa  
Khyber Pakhtunkhwa Revenue Authority

## Application for New Registration with KPRA as Service Provider

Token No: 3722126 KNTN : KG484061-5 STRN: Registration Type: COY Tax office: KPK

<b>Registry</b>			
Category	Company	Sub Category	DOMESTIC PVT LTD COMPANY
Reg/Inc No	0290658	Name	LAND MARK INTEGRATED ENGINEERING SERVICES (PRIVATE) LIMITED
Reg/Inc Date	10/04/2025	Status	Resident
		Country	PAKISTAN
Address	DAKHANA AGRA,KAMA AGRA,BATKHELA, MALANAD, MALAKAND, DISTT.MALAKAND P AREA,KHYBER PAKHTUNKHWA		
Main Activity	SERVICES PROVIDED BY PERSONS ENGAGED IN CONTRACTUAL EXECUTION OF WORK OR FURNISHING SUPPLIES (EXCLUDING TRANSACTIONS INVOLVING CONTRACTUAL SUPPLY OF GOODS ONLY WITHOUT ANY COMPONENT OF SERVICE)		Activity Code 9810.0000
Register for	<input checked="" type="checkbox"/> Sales Tax	<input type="checkbox"/> ST W/H Agent	N°

<b>Representative</b>			
<input checked="" type="checkbox"/> Representative u/s 172.	<input type="checkbox"/> Authorized Rep. u/s 223	In Capacity	Principal Officer
CNIC/NTN	15402-7397788-3	Representative Name	SARDAR HUSSAIN
Address	DAKHANA AGRA,KAMA AGRA,BATKHELA, MALAKAND, DISTT.MALAKAND P AREA,KHYBER PAKHTUNKHWA		
Phone	(+92.300.0021032)	Cell	+92.300.0021032
Fax	+92.	E-mail	sardarhussain11021983@gmail.com

Directors / Share Holders					
Sr.	Type	Owner CNIC	Partner/Director/Owner Name	Share(%)	Capital
1	C	15402-9944707-7	ISMAIL AMIR	50.000000	50,000
2	C	15402-7397788-3	SARDAR HUSSAIN	50.000000	50,000
					Total Capital 100,000.00

Activities		
Sr.	Activity Code	Business Activity
1		

Business / Branches									
Sr.	STRN	Branch Type	Business Name	Address	Gas No.	Electricity No.	Bus. Start Date	Close Date	Sales Taxable
1		HeadOffice	LAND MARK INTEGRATED ENGINEERING SERVICES (PRIVATE) LIMITED	DAKHANA AGRA,KAMA AGRA,BATKHELA, MALAKAND		1262501922	10/04/2025		Yes

Bank Account						
Sr.	Bank Account No	Bank Account Title	Bank Name	Branch Address	Branch City	Account opening-Close Date
1	0531006927600001	LAND MARK INTEGRATED ENGINEERING SERVICES (PRIVATE) LIMITED	MCB ISLAMIC BANK LIMITED	Pak Haider, Batkhela, Malakand	MALAKAND	12/07/2025

Employer			
Sr.	NTN/FTN	Employer Name	Employer Address
1			

**Declaration**

I, the undersigned solemnly declare that to the best of my knowledge and belief the above information is true and correct and I am further declared that any legal notice sent on the email address given above shall be deemed to be served on me.

Date: 23/07/2025 CNIC/Passport No: 15402-7397788-3



# OUR LEGAL COMPLIANCES



**PUNJAB REVENUE AUTHORITY**  
GATEWAY TO DEVELOPMENT



## PRA REGISTRATION CERTIFICATE



G484061

<b>PNTN</b>	G484061-5
<b>Registration No.</b>	G484061
<b>Date of Registration</b>	23-Jul-2025
<b>Name</b>	LAND MARK INTEGRATED ENGINEERING SERVICES (PRIVATE) LIMITED
<b>Type</b>	Company
<b>Business Name</b>	LAND MARK INTEGRATED ENGINEERING SERVICES (PRIVATE) LIMITED
<b>Business Address</b>	Dakhana Agra, Kama Agra, Tehsil Bat Khela, Malakand, -, -, Pakistan
<b>Category</b>	WithHolding Agent / Service Provider
<b>Inc./Reg No</b>	0290658
<b>Commissionerate</b>	Lahore Commissionerate
<b>Principal Activity</b>	9812.0000 - Telecommunication services. / Telecommunication Services
<b>Other Activities</b>	
<b>Status</b>	Active As on 23-Jul-2025

This is a computer generate certificate and, hence, no signatures are required.  
This certificate shall be prominently displayed at a conspicuous place of the premises in which business or work for gain is carried on.  
NTN certificate is also required to be indicated on the signboard.

042-99205476-77 042-9920576 042-99205481
eSupport@pra.punjab.gov.pk https://e.pra.punjab.gov.pk

Date of Print 23-Jul-2025



## OUR CLIENTS

Below are our Major Clients from them we associated from over decade, most of them are Multinational & Corporate Sector;

- PTCL (Pakistan Telecommunication Limited)
- Huawei Technologies Pakistan (Pvt) Limited
- ZTE Pakistan (Pvt) Limited
- Alcatel Pakistan (Pvt) Limited
- Ericsson Pakistan (Pvt) Ltd.
- NTC (National Telecommunication Corporation)
- CM Pak (Pvt.) Ltd.
- Nera Tel Pakistan
- Emircom
- NEC Pakistan
- LCC Pakistan
- Mobilink
- Powertech Pakistan (Pvt) Ltd
- Ufone
- Burraq
- Wise Communication systems Private limited.



## FUTURE OUTLOOK

Signaling Integrated Services Professional Services is dedicated to providing a first-class level of service to all customers, for both on-site and remote support activities.

With our network we can offer value-added knowledge to safeguard your market position –wherever you may be in the world, The highest level of support within the shortest response.

We look forward to working with you as one of our ever-growing number of long-term customers.

Contact us to establish which level of support would be optimal for your company.



# THANK YOU



**LM** Engineering  
Services (Pvt) Limited